

# Star Classic Investment

UP TO 80% LVR

Principal and Interest

**6.48%** p.a.<sup>1,2</sup>

Interest rate

**6.51%** p.a.<sup>1,2</sup>

Comparison rate

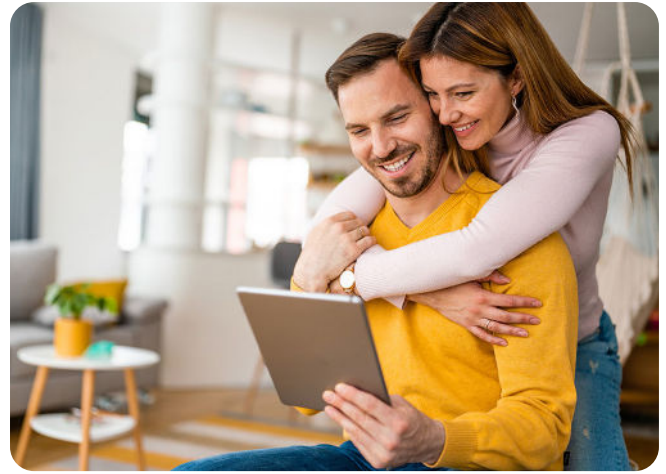
Interest Only

**6.88%** p.a.<sup>1,2</sup>

Interest rate

**6.91%** p.a.<sup>1,2</sup>

Comparison rate



## Packed with features



No ongoing fees



Visa Debit card



Redraw



Flexible repayment options



Unlimited extra repayments





Multiple loan splits



Offset facility

## Product features

Acceptable purpose	Purchase or refinance
Payments	P&I IO
Max LVR	90% <sup>1</sup>
Max term	360 months
Min loan amount	\$50,000
Max loan amount	\$3,500,000
Cash out	Yes
Online internet access & digital wallet	App or Internet  

## Fees

Valuation fee	\$0 <sup>5</sup>
Third party costs	At cost <sup>3</sup>
Loan settlement fee	\$0
Discharge administration fee (waived if loan goes full term)	\$595 <sup>4</sup>
Lenders Protection Fee	Only applies where LVR exceeds 80% LVR



Let's talk  
1300 462 209



Visit us  
homestarfinance.com.au



Customer service  
service@homestarfinance.com.au

© 2026 Copyright Homestar Finance Pty Ltd  
ACN: 109 413 498  
Australian Credit Licence Number 390 860

**homestar**  
finance

<sup>1</sup> Rates shown apply to new eligible investment loans only, at the LVR indicated, loan amounts up to \$3,500,000 and at least one applicant is on PAYG employment. Rates are subject to change without notice. Existing borrowers may have different interest rates which are dependent on the rate offered to the borrower at the date when a home loan settled and any reductions or increases the lender decided to make on the existing loan over time. Accordingly, there is not one standard variable rate that applies to all Homestar home loans and existing customers can confirm their current rate(s) by logging in to our online Internet Access portal or by contacting customer service. Terms, conditions, and eligibility criteria apply.

<sup>2</sup> Comparison rates are based on a basic Homestar loan, on a \$150,000 loan amount over 25 years. **WARNING:** This comparison rate is true only for the examples given and may not include all fees and charges. Different terms, fees or other loan amounts might result in a different comparison rate.

<sup>3</sup> Third party costs reasonably incurred in providing this service may include legal, custodian, mortgage management, land registry and electronic processing fees. These costs may vary and are payable by the applicant.

<sup>4</sup> Discharge administration fee is waived if loan reaches full term as per the loan agreement.

<sup>5</sup> Metro locations under \$1m.

Other fees and charges may apply.